

# A Global Partner for Medical Aesthetics Systems

COPPER BROMIDE / Q-Switched Nd:YAG / Long-Pulse Nd:YAG / FRACTIONAL CO<sub>2</sub> / CO<sub>2</sub> / SLIM WAVE

**BISON**  
MEDICAL EQUIPMENT MANUFACTURER

BISON MEDICAL CO., LTD.

## CEO's Message

As the president of BISON MEDICAL, I am proud to welcome you to the universe of one of the strongest and most phenomenal growing aesthetic laser's companies in the world.

BISON MEDICAL has undergone a phenomenal expansion period over the last 4 years, working with 45 partners all over the world. There's a reason why BISON's devices are so frequently praised for doctors and patients in every corner of the globe. It is based on the development of its own unique technologies, beautiful design, creative solution, outstanding quality and a never failing will to pursue perfection and make the impossible possible.

My promise to you is that we will continue to push ourselves to surprise and impress you. We believe that every skin-your skin-can be great skin. All of us at BISON MEDICAL wish you the enchantment of beauty.

Thank you.

Sunwoo, Lee  
CEO



ISO13485



KGMP



CE



Promising Export Firm



INNO-BIZ



KFDA

## Our Global Partners Since 2009

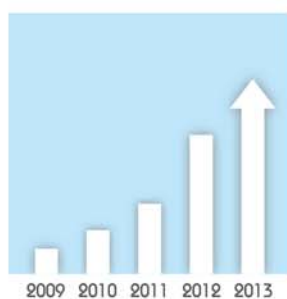


### SYSTEM



All departments at BISON MEDICAL push themselves to develop new technology and bring it to you in the most attractive design, quality and service.

### GROWTH



Bison has undergone a phenomenal expansion period over the last 4 years, working with more than 45 countries all over the world.

### SERVICE



BISON MEDICAL always strives to offer customers a level of service that matches the unprecedented focus on quality and finish of the products we create.

# Technology

## Research and Development (R&D)



Our engineers always strive to develop next generation's laser based on our unique technologies and creative solution.

- We are investing in research and development in the long term for the development of existing technologies and new differentiated technologies.
- We are systemical system through operating the professional teams.



## Design



Our designers have always made the difference and bring it to patients and physicians in the most attractive design expression.

1. Project Planning → 2. Design Concept → 3. Idea Sketch → 4. 3D-Rendering → 5. Detail Refinement → 6. Mockup → 7. Mechanical Design → 8. Followup

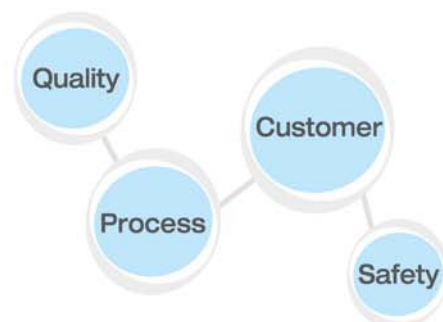


## Quality Control(QC)



We are doing our best to maintain customer satisfaction and quality of the equipment related to credibility.

- Factory quality control
- Establishment, implementation and maintenance of the production process system
- Quality improvement based on customer satisfaction and requirements
- Compliance with legal requirements of medical devices





Yellow/Green/Dual/Y10G/Y30G

# COPPER BROMIDE

- Dual Wavelength of the Copper Bromide Laser
- Selective Use of the 5 Different Kinds of Dual Wavelength
- Selective Treatment through the Various Spot Size
- The benefits of laser auto-calibration
- Fast Heating and Cool-Down

Superior Laser Technology  
Immediate Improvement in Appearance  
Flexible, Effective Improvement  
Effectiveness Proven by Independent Clinical Trials  
Minimizing Skin Damage with Excellent Control  
Bloodless Lesion Removal  
No Purpura Response

## DUAL Yellow 578nm Green 511nm LASER



### System Specifications

#### General

Dimension (w x d x h)	370 x 1320 x 1010 (mm)
Weight	190 Kg
Weight including accessories	205 Kg
Main voltage	220-240 VAC, 50-60Hz
Maximum power, in operation	1700 W
Safety class	Class IV laser

#### Laser system

Laser type	Copper Bromide Laser
Wavelength	511nm(100%) , 578nm(100%) 511nm(10%) , 578nm(100%) 511nm(30%) , 578nm(100%) 511nm(0%) , 578nm(100%) 511nm(100%) , 578nm(0%)
Beam mode	Multi mode
Spot size (Automatically adjustable)	0.6mm / 1.0mm / 2.0mm 3.0mm / 4.0mm / 5.0mm
Fluence on the skin	75 - 2500 J/cm <sup>2</sup> at spotsize 0.6mm 30 - 900 J/cm <sup>2</sup> at spotsize 1.0mm 7 - 222 J/cm <sup>2</sup> at spotsize 2.0mm 3 - 99 J/cm <sup>2</sup> at spotsize 3.0mm 2 - 55 J/cm <sup>2</sup> at spotsize 4.0mm 1 - 35 J/cm <sup>2</sup> at spotsize 5.0mm
Pulse duration	10 ~ 1000ms , Continuous wave
Delivery system	Via optical fiber
Cooling system	Air

# LUCID QY

1064nm / 532nm Q-Switched Nd:YAG Laser

Q-switched Nd:YAG laser uses two wavelength of 1064nm and 532nm with very short pulse duration time, thus irradiated laser is absorbed in melanin pigment selectively without damaging surrounding tissues. Wavelength of 532nm mainly destroys pigments in epidermis such as freckle, lentigo due to its short penetration, and wavelength of 1064nm treats pigments in dermis such as tattoo, nevus of ota due to its long penetration.

## Quasi-Long mode

Quasi-Long Pulse(pulse width 300 $\mu$ s @ 1064nm) is a combination of toning and lifting which enables pigmented cells to absorb the laser selectively. It stimulates collagen by the destruction of pigmented cells and it is useful in general skin regeneration of peeling, improvement of loose skin and minimizing large pores.

## High Pulse frequency

With fast irradiation speed of 20Hz, it minimizes skin exposure to the laser for less damage of normal tissues with shortened time of treatment.

## Auto-adjustable spot size

Spot size change is available without replacing the tip, and the system recognizes automatically providing user convenience and safety, and selective treatment of various areas is available.

## Advanced arm

Arm adjustment by user's characteristic is available due to the use of robust high-class components, and it is more shock-resistant than existing product through advanced design.

## 532nm / 1064nm Dual Pulsed

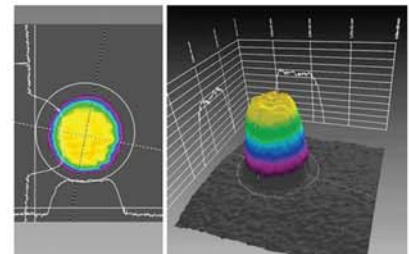
It is very effective in removal of pigmented lesions in epidermis and dermis since it uses two wavelength of 532nm and 1064nm, and it has broad indications for effective use.

## Stable Power supply system

You can use it stably without change of energy even at longtime treatment since stable large output of power is used.

## TOP hat mode

Beam irradiation type is top hat one, and it irradiates energy equally, which is difficult using existing methods, with less side effects such as PIH.



## System Specifications

### General

Dimension (w x d x h)	290 x 700 x 830 (mm)
Weight	68 Kg
Weight including accessories	75 Kg
Main voltage	220/230V, 50/60Hz
Maximum power consumption	2500 VA
Main current	12 A
Safety class	Class IV laser

### Laser system

Laser type	Q-Switched Nd:YAG
Wavelength	1064nm / 532nm
Beam delivery system	Via 7-articulated arm
Aiming beam	650nm, 5mW
Beam profile	Top Hat Mode
Maximum pulse energy	1200mJ @ 1064nm Quasi-Long
Maximum pulse energy	1100mJ @ 1064nm Q-Switched
Maximum pulse energy	500mJ @ 532nm Q-Switched
pulse width	~8ns @ 1064nm, ~7ns @ 532nm
Maximum pulse frequency	20Hz
Minimum pulse frequency	0.4Hz
Laser cooling	Water-to-air heat exchanger
Spot size	$\phi 2 - \phi 10$ (mm)

# LUCID LY

## 1064nm Long Pulse Nd:YAG Laser

It has low absorbancy of melanin and deep skin depth due to high energy, thus it stimulates dermis layer without damage of epidermis rearranging collagen, which improves loose skin and fine wrinkles. Especially, it is good for varicose veins since wavelength of 1064nm has good absorbancy in blue series, and advantage of Nd:YAG is that depth of penetration into the skin is deeper with less side effects than dye laser.

### Auto-adjustable spot size

Spot size change is available without replacing the tip, and the system recognizes automatically providing user convenience and safety, and selective treatment of various areas is available.

### Automatic skin diagnosis system

It measures skin condition, brightness and blood circulation using the camera of handpiece making real-time display through 7 inch monitor. Also, it has a smart camera mode helping the treatment using those values.

### Dual touch display

You can watch real-time skin condition and compare before and after the treatment through skin analyzing monitor, and the monitor with excellent visibility and operability can control the system.

### Cooling spray

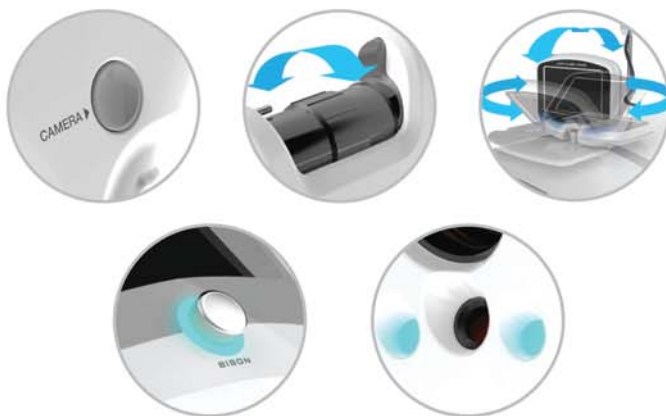
It calms down the skin by direct cryogen method, and it minimizes side effects like pain and PIH that may occur after the treatment.

### TOP hat mode

Beam irradiation type is top hat one, and it irradiates energy equally, which is difficult using existing methods, with less side effects such as PIH.

### Power supply system

You can use it stably without change of energy at longtime treatment since stable large output of power is used.



## System Specifications

### General

Dimension (w x d x h)	430 x 1030 x 990 (mm)
Weight	75 Kg
Weight including accessories	84 Kg
Main voltage	220/230V, 50/60Hz
Maximum power consumption	2990 VA
Main current	13 A
Safety class	Class IV laser

### Laser system

Laser type	Long pulse Nd:YAG
Wavelength	1064nm
Beam delivery system	Via optical fiber $\Phi$ 1000um x 3m
Aiming beam	650nm, 5mW
Maximum pulse fluence	900J/cm <sup>2</sup>
Maximum pulse frequency	10Hz
Minimum pulse frequency	0.4Hz
Maximum pulse width	100ms
Minimum pulse width	200us
Laser cooling	Water-to-air heat exchanger
Cryogen material	HFC-134a
Spot size	$\Phi$ 3 ~ $\Phi$ 15 (mm)





# Scanning MORE-XEL

Exclusive Features of MORE-XEL RF-Scanning

## System Specifications

### General

Dimension (w x d x h)	320 x 700 x 970 (mm)
Weight	53 Kg
Weight including accessories	60.3 Kg
Main voltage	220-240 VAC, 50-60Hz
Maximum power, in operation	330 VA
Safety class	Class IV laser

### Laser system

Laser type	Fractional CO2 laser, Scanner type
Wavelength	10.57 ~ 10.63 $\mu\text{m}$ , invisible infrared
Beam mode quality	TEM00, 95% purity
Beam quality (at 1/e <sup>2</sup> )	M <sup>2</sup> ≤ 1.2
Laser power output, continuous	10W
Adjustable Spot size	100 / 300 / 600 $\mu\text{m}$
Cooling system	Air

### Scanning system

Scanning area	X : 3 ~ 20 mm, Y : 3 ~ 20mm
Scanning shape	Rectangle, Circle, Diamond, Hexagon, Round rectangle
Scanning direction	Sequence, Converge, Diverge, Smart Random, Spray
Overlap	1 ~ 9 times
Overlap delay	200 ~ 40,000 $\mu\text{s}$

- Super Smart Skin Analysis System
- World's First Skin Type Selection Function
- RF-DRIVER
- Galvano Motor
- Multi-Mode
- Simple to Use & Faster Treatment Times



- A.I Skin Analyzing System
- 3 Way Mode
- Premium Quality
- Various Selectivity-Over 3,000 Scanning Modes
- Human-Friendly Design

## FIRE-XEL

Dynamic 3-Way Mode

## System Specifications

Dimension (w x d x h)	320 x 420 x 1100 (mm)
Weight	38 Kg
Weight including accessories	45.3 Kg
Main voltage	220-240 VAC, 50-60Hz
Maximum power, in operation	400 VA
Safety class	Class IV laser
Laser type	Fractional CO2 laser, Scanner type
Adjustable Spot size	120 / 300 / 600 $\mu\text{m}$
Cooling system	Water
Scanning area	X : 3 ~ 20 mm, Y : 3 ~ 20mm
Scanning shape	Rectangle, Circle, Diamond, Hexagon, Round rectangle
Scanning direction	Sequence, Converge, Diverge, Smart Random, Spray
Ultra pulse	Pulse width 400 ~ 1,250 $\mu\text{s}$ Exposure time 10 ~ 1,000ms Repeat delay 10 ~ 1,000ms / Single Power peak 7.0 ~ 20 Watt
Super pulse	Exposure time 500 ~ 9,000 $\mu\text{s}$ Repeat delay 10 ~ 1,000ms / Single Power 10.0 ~ 30.0 Watt
Continuous wave	Power 0.5 ~ 30.0 Watts





- RF-Driver
- Stamp Mode
- Spray Mode
- More Stable beam quality
- More Precise beam
- Dynamic Multi Mode (All in one)

## Fractional CO<sub>2</sub> Laser RF-Driver

# MORE-XEL

Stamp/Spray/UltraPulse

Advanced RF-Driver and Stamp-laser technology.

### System Specifications

Dimension (w x d x h)	320 x 700 x 970 (mm)
Weight	55 Kg
Weight including accessories	57.2 Kg
Main voltage	220-240 VAC, 50-60Hz
Maximum power, in operation	330 VA
Safety class	Class IV laser
Laser type	Fractional CO <sub>2</sub> laser
	RF Stamp type
Laser mode	Stamp, Spray, Ultra pulse, CW
Laser power output	1-40W
Spot size	70 $\mu$ m, 49 pixel (10 x 10 mm)
Cooling system	Air
Ultra pulse	Pulse width 200 ~ 1000 $\mu$ s
Continuous wave	Power 0.5 ~ 40W
Temperature	+10 ~ +40 $^{\circ}$ C
Relative humidity	30 ~ 75%
Atmospheric pressure	700 ~ 1060 hPa

## Slim Wave BS-100

"SLIM WAVE helps you achieve outstanding turnaround in reshaping your appearance with a safe, non invasive treatment."

- Graceful design & Convenient function
- Pre-set programs
- User-friendly operation
- Promotes muscle relaxation
- Enhances blood flow

### System Specifications

Dimension (w x d x h)	337 x 243 x 85 (mm)
Weight	3.7 Kg
Main voltage	AC 110-220V, 50/60Hz
Power consumption	30W
Classification	Class 1, Type BF
Max output current	40mA RMS
Max output voltage	65Vp-p
Channel	8 CH
Pulse	250 $\mu$ s
Treatment hertz	50Hz ~ 500Hz
Treatment time	5min ~ 60min
Accessory	Single pad 6ea(3set), Spin pad 1ea, etc.





### SURGICAL CO<sub>2</sub> LASER SYSTEM

**CYMA** Clinic

Nevus (birth mark)  
Seborrheic keratosis  
Wart  
Corn, Clavus  
Acne  
Circumcision  
Operation on snoring  
Hemorrhoid

Lentigo  
Miliun  
Syringoma  
Soft fibroma  
Ingrowing nail  
Wrinkle removal  
Axillary odor, etc.

### DENTAL CO<sub>2</sub> LASER SYSTEM

**CYMA** Dental

Laser anesthesia  
Lingual frenectomy  
Cervical hypersensitivity  
Removal of tooth pigmentation  
Tooth canal irrigation  
Periodontal pocket irrigation  
Crown lengthening procedure  
Gingival incision / gingivoplasty  
Pulp capping (disinfection / sterilization)  
Implant surgery  
Herpetic stomatitis, etc.



## 15 Indication modes

In the "indication mode", the energy and procedural guidance for each symptom is indicated on the display, offering practitioners a quick and easy procedural environment. In addition, the practitioners can control "repeat time", "pulse width", etc., according to the condition of the patient, enabling an even more detailed and stable procedure.

- 15 Indication modes
- Storage of personalized laser treatment data
- SuperPulse-, Pulser- and CW operating modes
- Cutting edge innovative
- Safe, Effective and Reliable
- Patient Satisfaction
- High Power Output

## System Specifications

Dimension (w x d x h)	320 x 420 x 1160 (mm)
Weight	40.3 Kg
Weight including accessories	44.1 Kg
Main voltage	220-240 VAC, 50-60Hz
Maximum power, in operation	300 VA
Safety class	Class IV laser
Laser mode	Super pulse, Ultra pulse, CW
Spot size	120 μm
Ultra pulse	Pulse width 200 ~ 1000 μs
Super pulse	Pulse width 1 ~ 20 ms
Continuous wave	Power 0.5 ~ 30W
Cooling system	Water
Ultra pulse	Pulse width 400 ~ 1,250 μs Exposure time 10 ~ 1,000 ms Repeat delay 10 ~ 1,000 ms / Single Power peak 7.0 ~ 20 Watt
Super pulse	Exposure time 500 ~ 9,000 μs Repeat delay 10 ~ 1,000 ms / Single Power 10.0 ~ 30.0 Watt
Continuous wave	Power 0.5 ~ 30.0 Watts
<b>CYMA Clinic option</b>	
ENT Kit	1 ENT handpiece / 5 Tips

# BISON PRODUCTS



## LUCID QY

- 1064nm / 532nm Q-Switched Nd:YAG laser
- Auto-adjustable spot size
- 10" 4 inch touch display
- Unique Jog & Shuttle Controller



## LUCID LY

- 1064nm Long pulse Nd:YAG laser
- Dual touch display
- Auto-adjustable spot size
- Automatic skin diagnosis system
- Cooling spray



## LUCID D

- 808nm / 980nm Diode laser
- Advanced cooling system
- Direct connecting
- Touch display / Jog & Shuttle
- Compact size



## COPPER BROMIDE

- Dual yellow 578 / 511nm laser
- 5 Different wavelength
- Fast heating and cool-down
- Auto-adjustable spot size



## FIRE - XEL

- CO<sub>2</sub> fractional laser
- User - friendly treatment Interface
- Multiple modes (Scanning, UP, SP, CW)
- New-style design



## MORE - XEL Scanning

- CO<sub>2</sub> fractional laser (RF-tube)
- Super smart skin analysis system
- Multiple modes (Scanning, UP, SP, CW)
- Adjustable spot size



## Slim Wave

- Promotes muscle relaxation
- Dual treatment system
- Compact design and simple operation
- Controls whole body slimming
- Various treatment accessories



## MORE - XEL Stamp

- CO<sub>2</sub> fractional stamp laser (RF-tube)
- More stable beam quality
- Multiple modes (Stamp, UP, CW)
- Quick treatment



## CYMA Dental

- CO<sub>2</sub> laser
- 15 Indication modes
- High power output
- Compact size & cost effective



## CYMA Clinic

- CO<sub>2</sub> laser
- 15 Indication modes
- High power output
- Compact size & cost effective



Seungil Venture Tower, 371-42 Gasan-dong, Geumcheon-gu, Seoul 153-803, Korea  
Office: 503(5F), R&D: 504(5F), Factory: 205(2F)

Tel) +82-2-865-7121

Fax) +82-2-865-7131

[sales@bisonmedical.com](mailto:sales@bisonmedical.com)