



1064nm / 532nm Q-Switched Nd:YAG Laser

**LUCIDQ-PTP™**

Q-PTP mode  
Quasi-Long mode  
Auto-adjustable spot size  
Auto-Calibration System

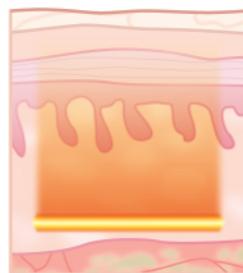
## 1064nm / 532nm Q-Switched Nd:YAG Laser

# LUCID Q-PTP™

LUCID Q-PTP utilizes two wavelengths of 1064nm and 532nm and delivers laser power in a very short period of time as 2 pulses. In order to reduce side effects of high energy, it adopts Q-PTP mode which divides the high energy into two pulses with very short duration. LUCID Q-PTP effectively reduces pigmented lesions on dermis and epidermis and also minimizes the risk of side effects such as hypopigmentation, pigmentation and recurrence of Melasma, comparing to previous laser toning procedures.

### Quasi-Long mode

Quasi-Long Pulse (pulse width  $300\mu s$  @ 1064nm) is a combination of toning and lifting which enables pigmented cells to absorb the laser selectively. It stimulates collagen by the destruction of pigmented cells, and it is useful to general skin for regenerating after peeling, improving loose skin, and minimizing large pores.



Normal Q-Switched Nd:YAG

More chances of side effects, induced by high energy in 1 pulse.

### Q-PTP mode

Q-PTP mode delivers 2 pulses of constant energy of laser power in a very short period of time. Compared to previous laser toning procedures, its energy is much higher. In order to reduce side effects of high energy laser such as hypopigmentation, pigmentation or Melasma recurrence, the high energy is divided into two, to increase the effect while reducing side effects. Q-PTP mode can be done at both 1064nm and 532nm wavelengths.



Q-PTP mode  
(Dual Pulse)

Safe energy delivering in 2 pulses.  
Less side effects.  
More effective treatment.



## 10.4 inch Touch Display

System can be controlled using 10.4 inch touch display with excellent visibility and operability.

### ▼ Auto-calibration



### ▼ Mass storage space



## Auto-Calibration System

## Handpiece

## Stable power supply system

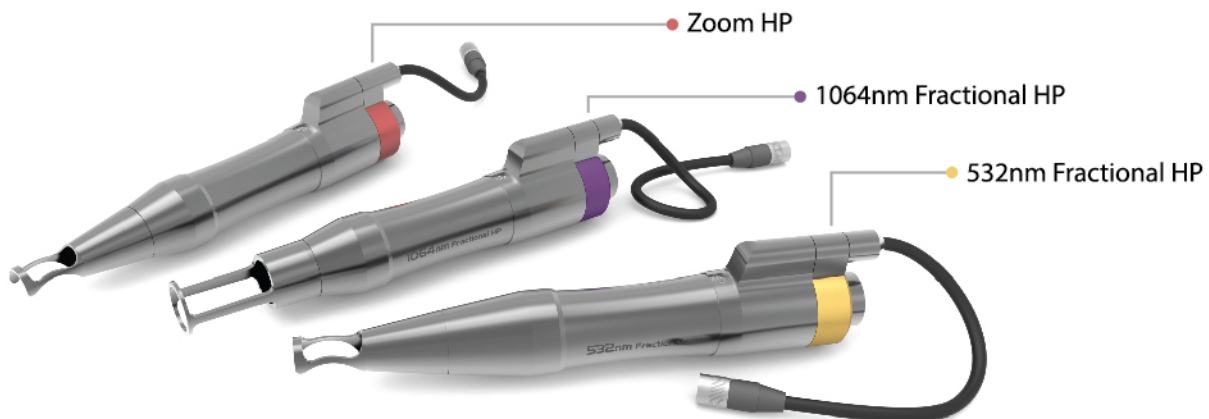
## Mass storage space

Cost-effective and reliable treatment can be done in spite of long hours of use since its auto-calibration system provides consistent and stable energy output.

For user convenience, the system recognizes Hand piece among three different types, one zoom Hand piece and two optional Fractional Hand pieces, and its spot size automatically. Two different types of hand piece tips are also provided for more comfortable operation.

You can use it stably without change of energy even at longtime treatment since stable large output of power is used.

Fast and accurate treatments tailored for each patient are applicable by saving the diverse lesions of patients at total 800 secured slots with 50 storage slots respectively for each of 15 built-in lesions and 1 user custom slot.



## SPOT SIZE IMAGE

### 1064nm Fractional HP

6 x 6 mm<sup>2</sup> / 9 x 9 dots



### 532nm Fractional HP

6 x 6 mm<sup>2</sup> / 9 x 9 dots



### Zoom HP

1064nm (1.5, 2, 3, 4, 5, 6, 7.5, 9, 10)mm

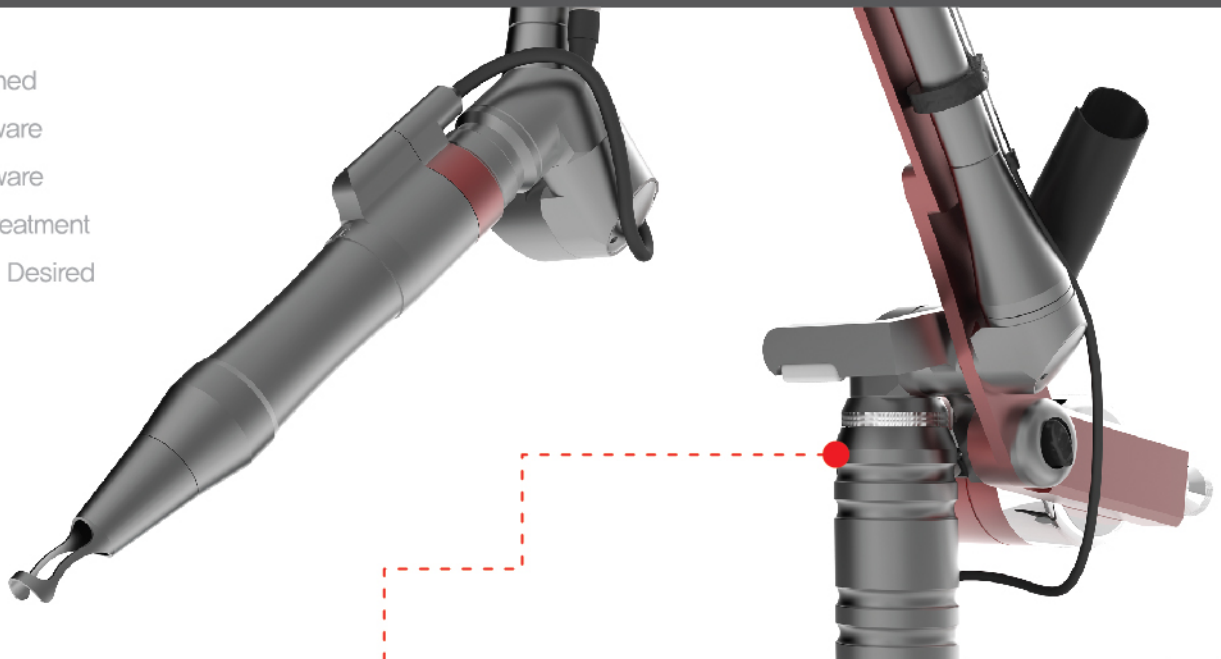


532nm (1, 1.5, 2.5, 3.5, 4.5, 5.5, 7, 8.5, 9.5)mm





Luxury Designed  
 Unique Hardware  
 Creative Software  
 Impression Treatment  
 Dermatologist Desired



### High pulse frequency

With fast irradiation speed of 15Hz, it minimizes skin exposure to the laser for less damage of normal tissues with shortened time of treatment.

### Advanced arm

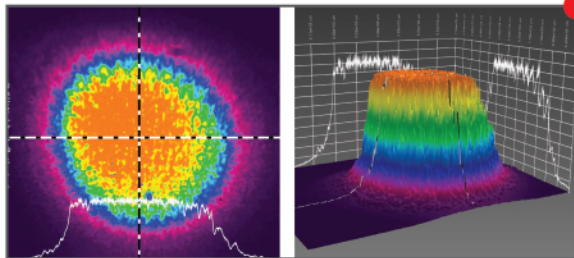
Arm adjustment by user's characteristic is available due to the use of robust high-class components, and it is more shock-resistant than existing products with advanced design.

### Top-Hat mode

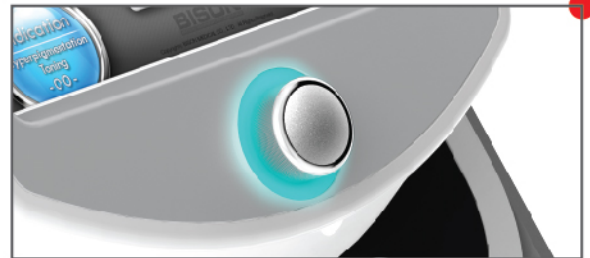
Top-Hat mode is an unique high-technology which makes the laser not only irradiates energy equally but also reduces side effects such as PIH.

### Unique jog & Shuttle controller

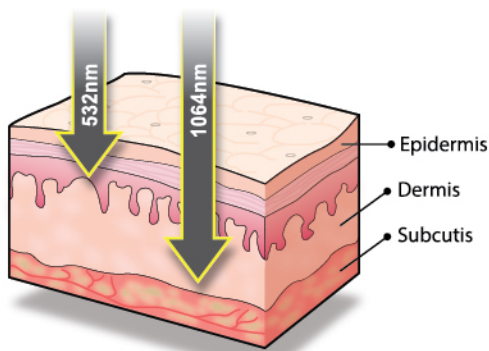
Easy and fast system control is available with the adoption of unique jog & shuttle controller design.



Top-Hat mode



Unique jog & Shuttle controller



532nm wavelength removes the pigmentation on epidermis, such as freckles, lentigos and age spots mostly, while 1064nm wavelength cures lesions responding to the pigmentation located deep inside of dermis, such as the tattoo, nevus of ota.

### Pigmented lesion

Freckle / Speckle / Blemish / Cafe au lait spot / Becker's nevus / Nevus of ota / Abnom /  
 Tattoo remova / Melasma / Hyperpigmentation

Etc. Skin rejuvenation / Shrink pores

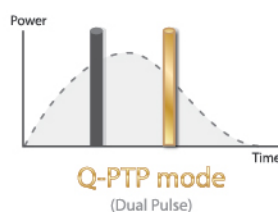
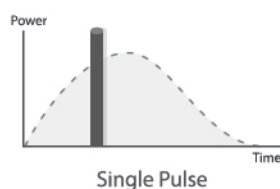
## System Specifications

### General

Dimension (W x D x H)	320(W) x 830(D) x1010(H) (mm) (Include Arm H : 1620 mm)
Weight	87.5 Kg
Weight including accessories	96 Kg
Main voltage	220/230V, 50/60Hz
Maximum power consumption	3000 VA
Main current	12 A
Safety class	Class IV laser

### Laser system

Laser type	Q-Switched Nd:YAG
Wavelength	1064nm / 532nm
Beam delivery system	Via 7-articulated arm
Aiming beam	635nm, 5mW
Beam mode quality	Top Hat Mode
Energy	Up to 2200mJ @ 1064nm PTP Q-Switched
	Up to 600mJ @ 532nm PTP Q-Switched
	Up to 1200mJ @ 1064nm Q-Switched
	Up to 500mJ @ 532nm Q-Switched
Pulse width	Up to 3400mJ @ 1064nm Quasi-Long
	5~7ns @ 1064nm Q-Switched
	5~7ns @ 532nm Q-Switched
	~20ns @ 1064nm PTP Q-Switched
Frequency	~20ns @ 532nm PTP Q-Switched
	300μs @ 1064nm Quasi-Long
	up to 25Hz @ 1064nm Q-Switched
	up to 15Hz @ 532nm Q-Switched
Laser cooling	up to 15Hz @ 1064nm PTP Q-Switched
	up to 15Hz @ 532nm PTP Q-Switched
	up to 25Hz @ 1064nm Quasi-Long
Laser cooling	Water-to-air heat exchanger



### Spot size (\* Optional)

Zoom Handpiece	1064nm (1.5, 2, 3, 4, 5, 6, 7.5, 9,10)mm 532nm (1, 1.5, 2.5, 3.5, 4.5, 5.5, 7, 8.5, 9.5)mm
*1064nm Fractional Handpiece	6 x 6 mm <sup>2</sup> , 9 x 9 dots, up to 5.2J/cm <sup>2</sup>
*532nm Fractional Handpiece	6 x 6 mm <sup>2</sup> , 9 x 9 dots, up to 1.3J/cm <sup>2</sup>

### Environmental Condition

Temperature	+10 ~ +40 °C
Relative humidity	30 ~ 75 %
Atmospheric pressure	700 ~1060 hPa



LUCID*Q-PTP*<sup>TM</sup>

**BISON**  
MEDICAL EQUIPMENT MANUFACTURER

Seungil Venture Tower, 136, Gasan digital 2-ro, Geumcheon-gu, Seoul, Korea  
Office: 503(5F), R&D: 504(5F), Factory: 205(2F)

Tel) +82-2-865-7121 Fax) +82-2-865-7131 sales@bisonmedical.com / bison@bisonmedical.com

Copyright© BISON MEDICAL CO., LTD. All rights reserved.